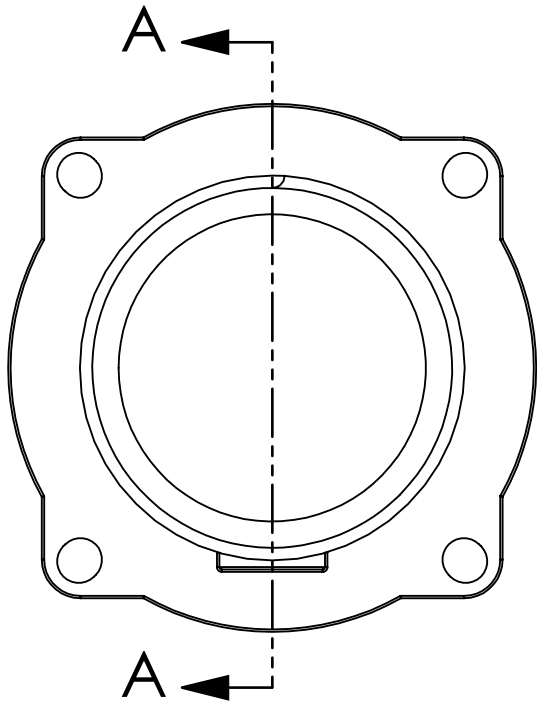
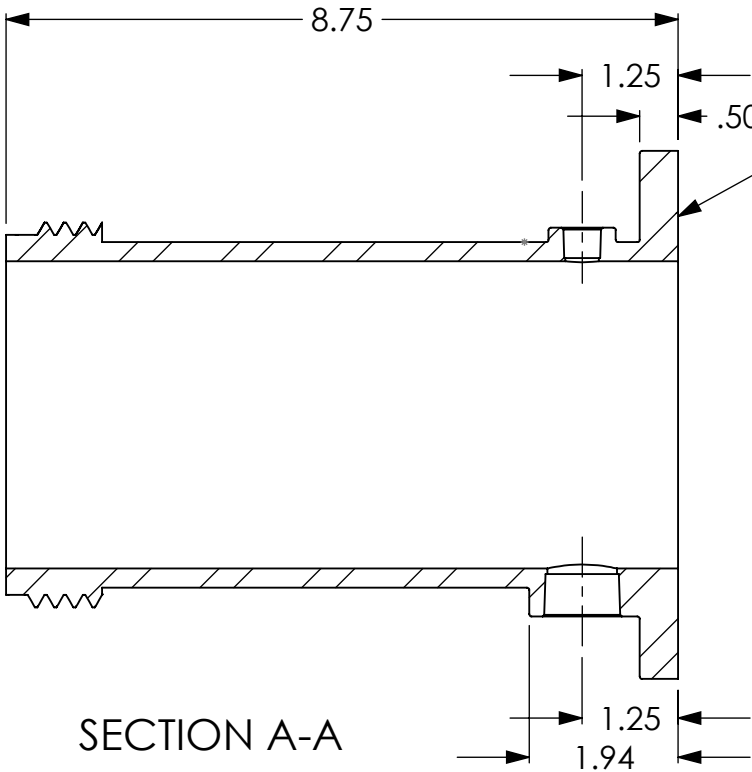
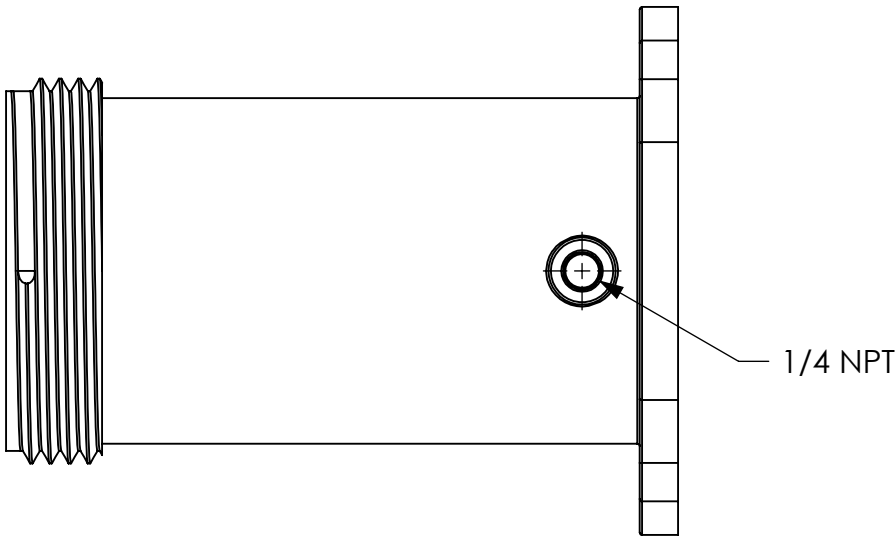


NOTES:

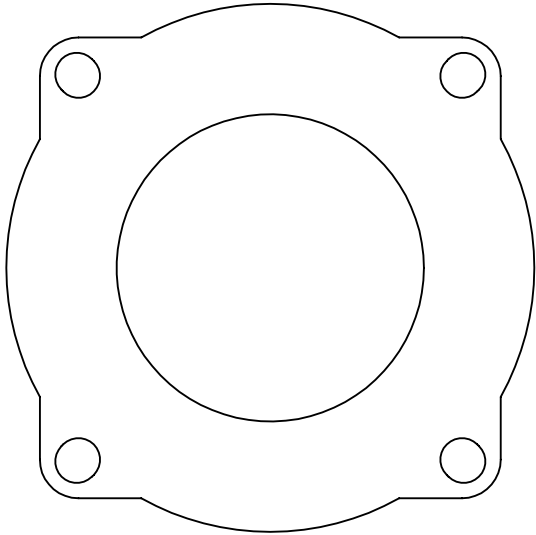
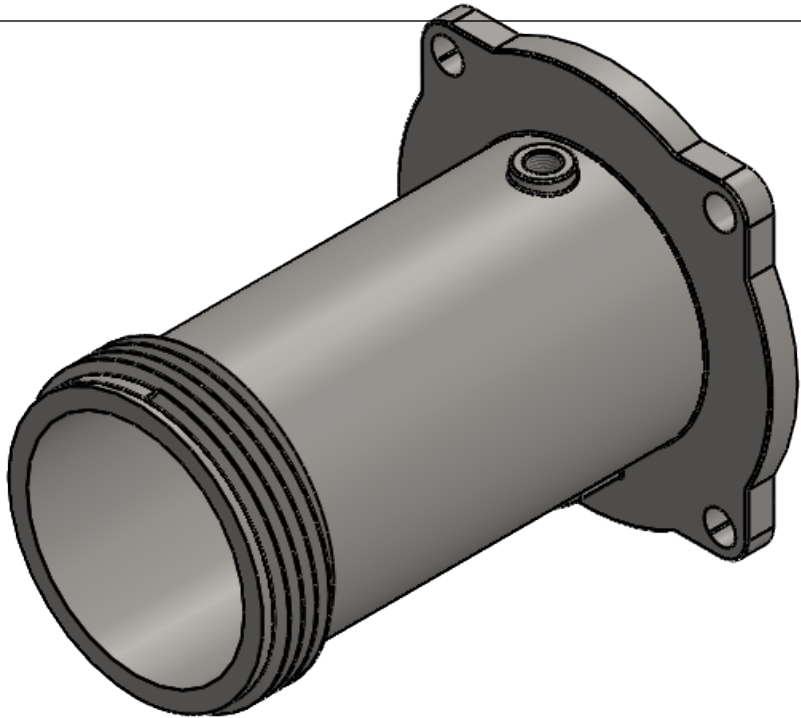
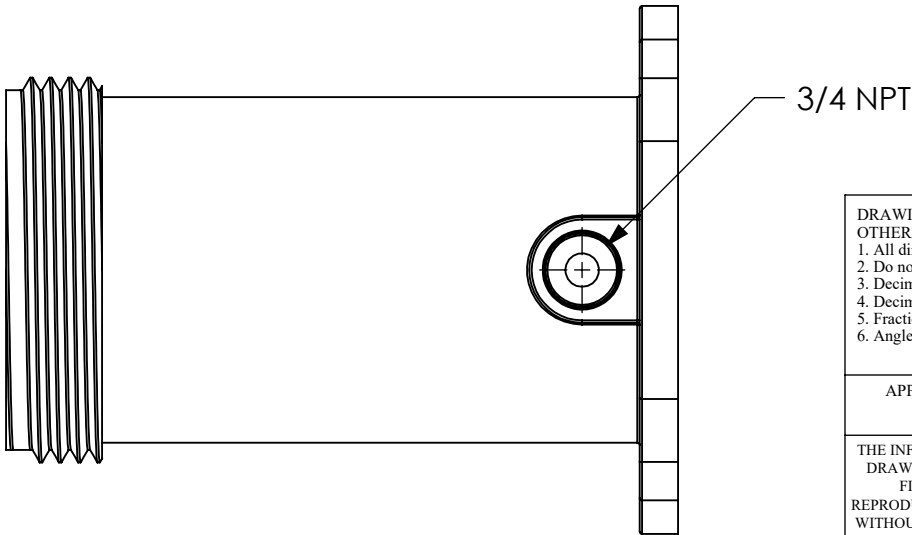
1. MATERIAL: AISI 304 STAINLESS STEEL.



4.0" NST w/  
Higbee Cut



SECTION A-A



| REVISIONS |           |                 |
|-----------|-----------|-----------------|
| REV.      | DATE      | DESCRIPTION     |
| A         | 7/18/2025 | Initial Release |

|   |   |  |  |
|---|---|--|--|
| <div>DRAWING NOTES UNLESS OTHERWISE SPECIFIED</div> <div>1. All dimensions are in inches.</div> <div>2. Do not scale drawing.</div> <div>3. Decimal Tolerance X.XX = +/- 0.01</div> <div>4. Decimal Tolerance X.XXX = +/- 0.005</div> <div>5. Fractional Tolerance X/X = +/- 1/16</div> <div>6. Angle Tolerance: +/- 1.0 degree</div> | <div>FirePrograms</div> <div>6405 SW 38th St, Bldg 200<br/>Ocala, FL 34474<br/>Phone: 800.327.7638<br/>www.fireprograms.com</div> |  |  |
|   | <div>TITLE</div> <div>Cstg 4.0 Vlv x 4.0 NST<br/>w/ Drain</div>   |  |  |
| <div>APPROXIMATE WEIGHT (LBS)</div> <div>12.651</div>   | <div>DRAWING NUMBER</div> <div>500500</div>   | <div>REV<br/>A</div> <div>DATE<br/>7/18/2025</div> | <div>SHEET SCALE<br/>1:2.5</div> <div>SHEET<br/>1 OF 1</div> |
| <div>THE INFORMATION CONTAINED IN THIS DRAWING IS THE SOLE PROPERTY OF FIRE PROGRAMS, LLC. ANY REPRODUCTION IN PART OR AS A WHOLE WITHOUT THE WRITTEN PERMISSION OF FIRE PROGRAMS, LLC IS PROHIBITED.</div>   |   |  |  |