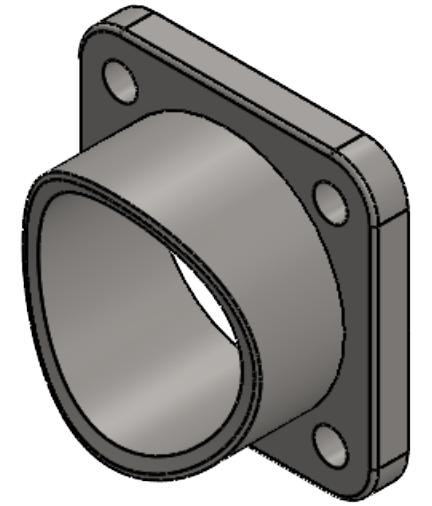
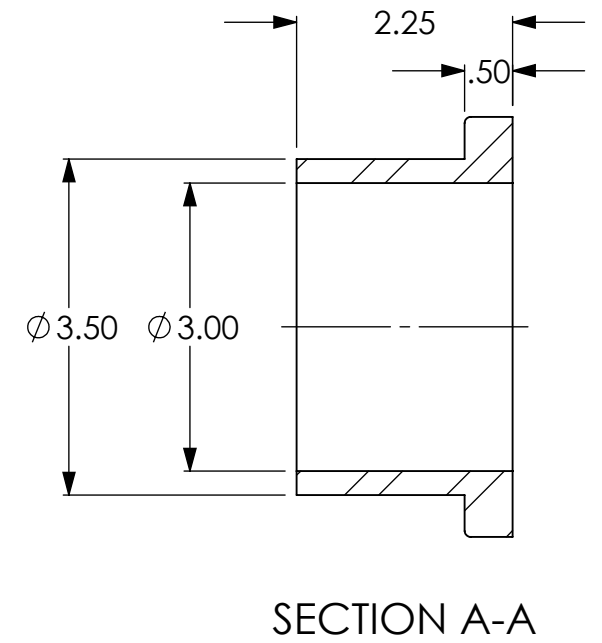
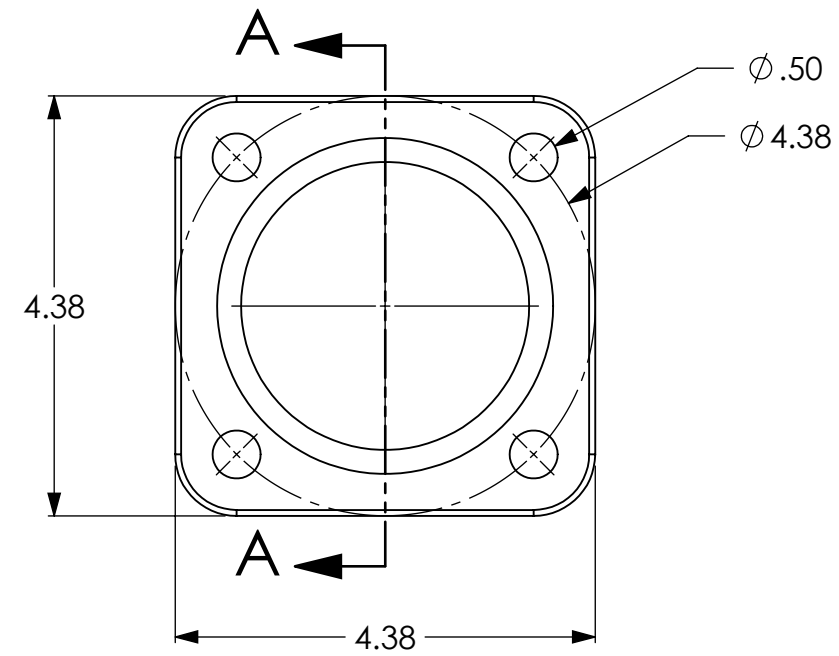
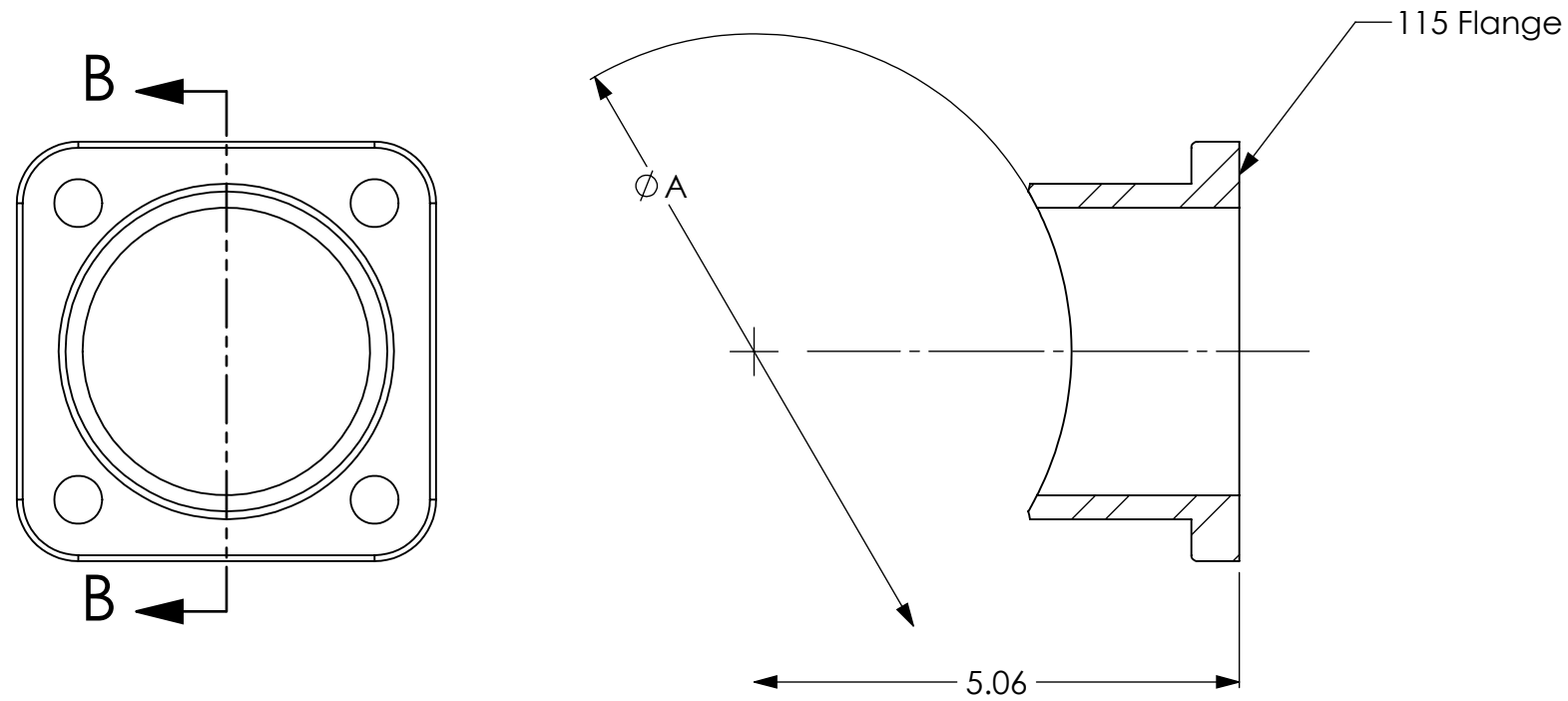


NOTES:

1. MATERIAL: AISI 304 STAINLESS STEEL.



SECTION B-B



SECTION A-A

Part Number	Dim A	Dim B
500320	N/A	N/A
500320-2.5	2.88	2.50
500320-3	3.50	3.00
500320-4	4.50	3.62
500320-5	5.56	4.37
500320-6	6.62	5.06
500320-8	8.62	6.19

REVISIONS		
REV.	DATE	DESCRIPTION
A	3/10/2023	Initial Release
B	1/2/2024	Added 500320-2.5 and 500320-3
C	1/16/2024	Added clarification to location of cut to drawing.

DRAWING NOTES UNLESS OTHERWISE SPECIFIED  
 1. All dimensions are in inches.  
 2. Do not scale drawing.  
 3. Decimal Tolerance X.XX = +/- 0.01  
 4. Decimal Tolerance X.XXX = +/- 0.005  
 5. Fractional Tolerance X/X = +/- 1/16  
 6. Angle Tolerance: 0.5 degrees

APPROXIMATE WEIGHT (LBS)  
**2.648**

THE INFORMATION CONTAINED IN THIS DRAWING IS THE SOLE PROPERTY OF FIRE PROGRAMS, LLC. ANY REPRODUCTION IN PART OR AS A WHOLE WITHOUT THE WRITTEN PERMISSION OF FIRE PROGRAMS, LLC IS PROHIBITED.

**FirePrograms**

6405 SW 38th St, Bldg 200  
 Ocala, FL 34474  
 Phone: 800.327.7638  
 www.fireprograms.com

TITLE  
**Cstg 115 x Pipe 3.0**

DRAWING NUMBER  
**500320**

REV C	SHEET SCALE 1:2
DATE 1/16/2024	SHEET 1 OF 1