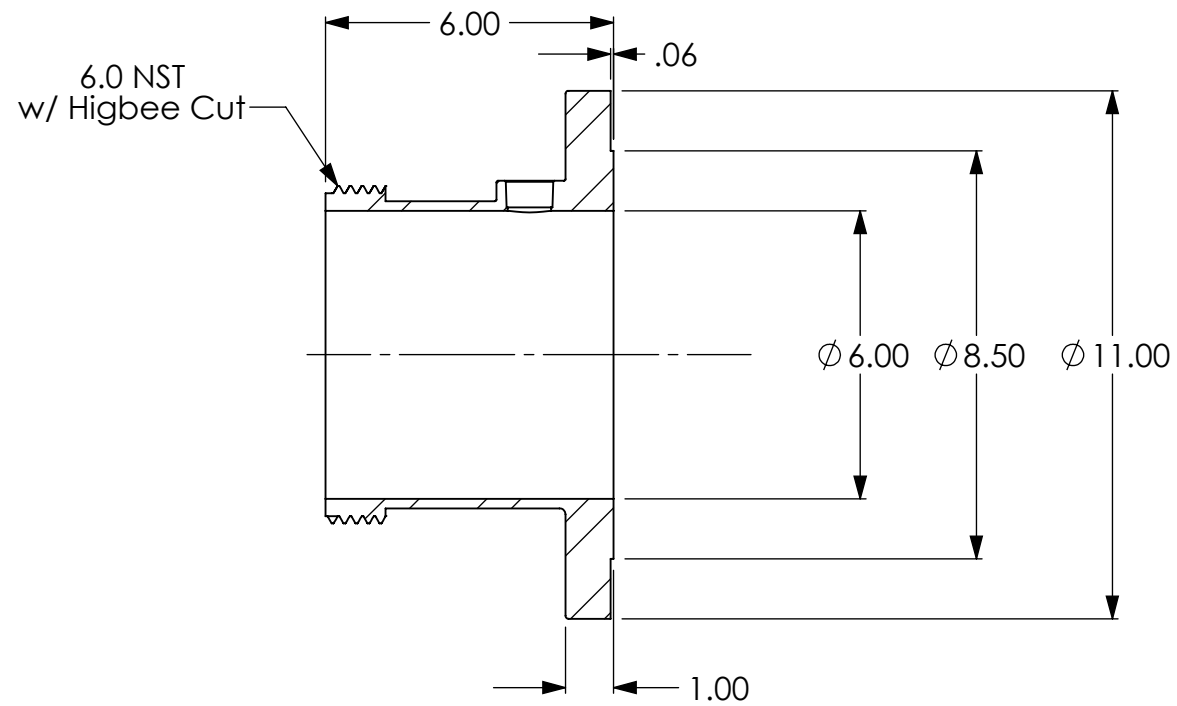
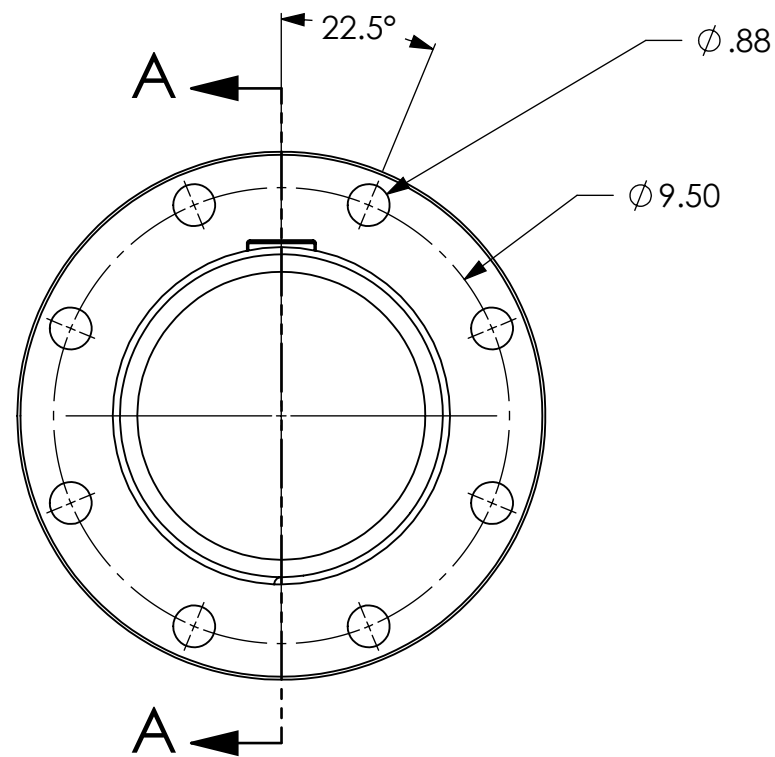
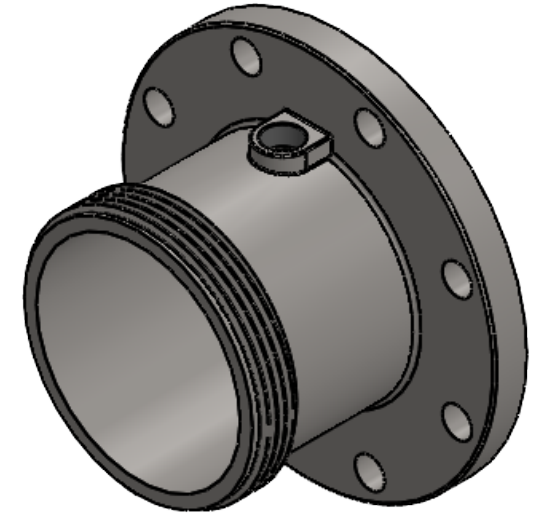
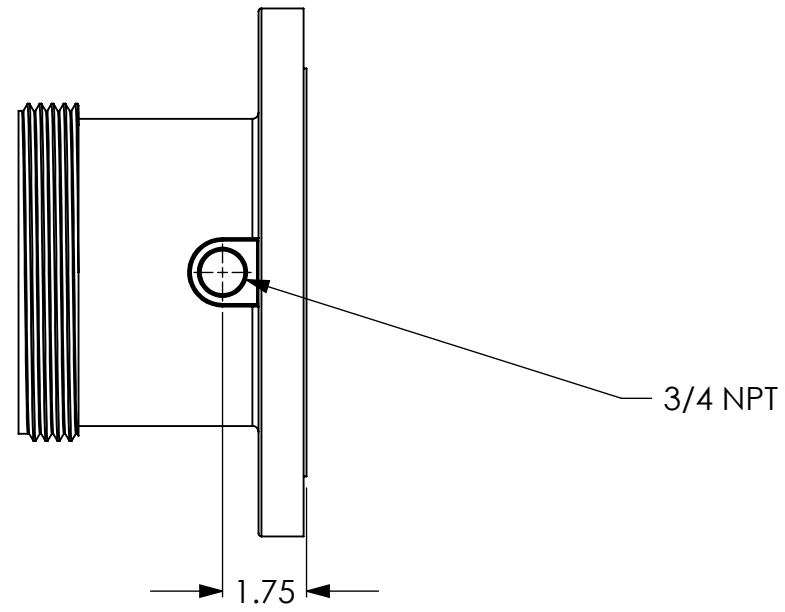


NOTES:

1. MATERIAL: AISI 304 STAINLESS STEEL.



SECTION A-A

DRAWING NOTES UNLESS OTHERWISE SPECIFIED

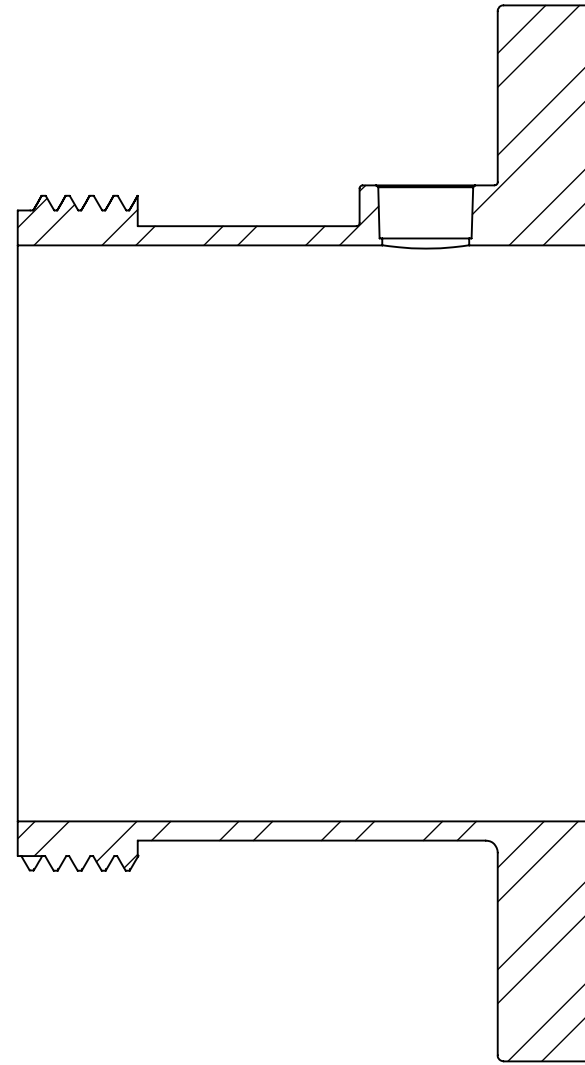
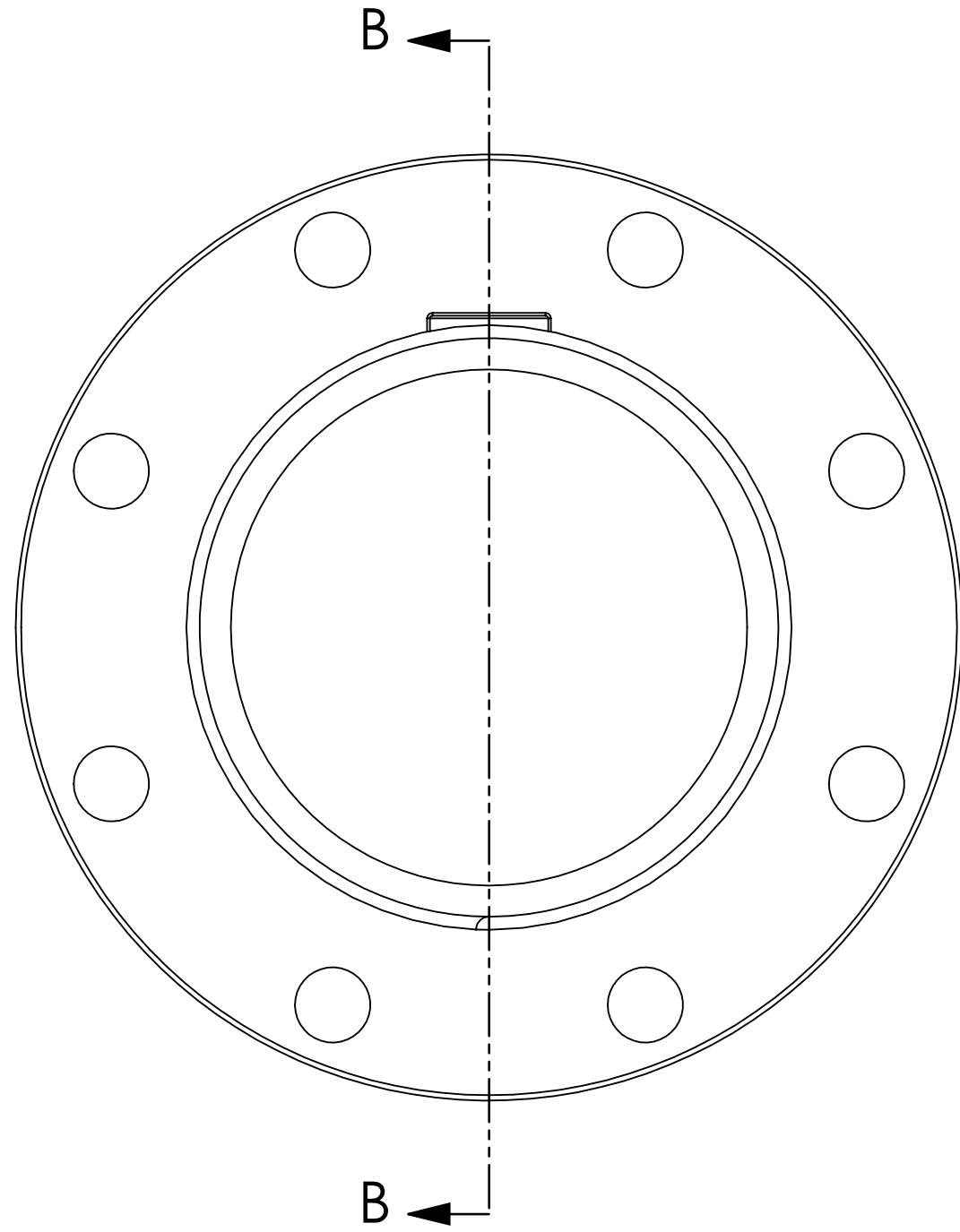
- All dimensions are in inches.
- Do not scale drawing.
- Decimal Tolerance X.XX = +/- 0.01
- Decimal Tolerance X.XXX = +/- 0.005
- Fractional Tolerance X/X = +/- 1/16
- Angle Tolerance: 0.5 degrees

APPROXIMATE WEIGHT (LBS)  
24.816

THE INFORMATION CONTAINED IN THIS DRAWING IS THE SOLE PROPERTY OF FIRE PROGRAMS, LLC. ANY REPRODUCTION IN PART OR AS A WHOLE WITHOUT THE WRITTEN PERMISSION OF FIRE PROGRAMS, LLC IS PROHIBITED.

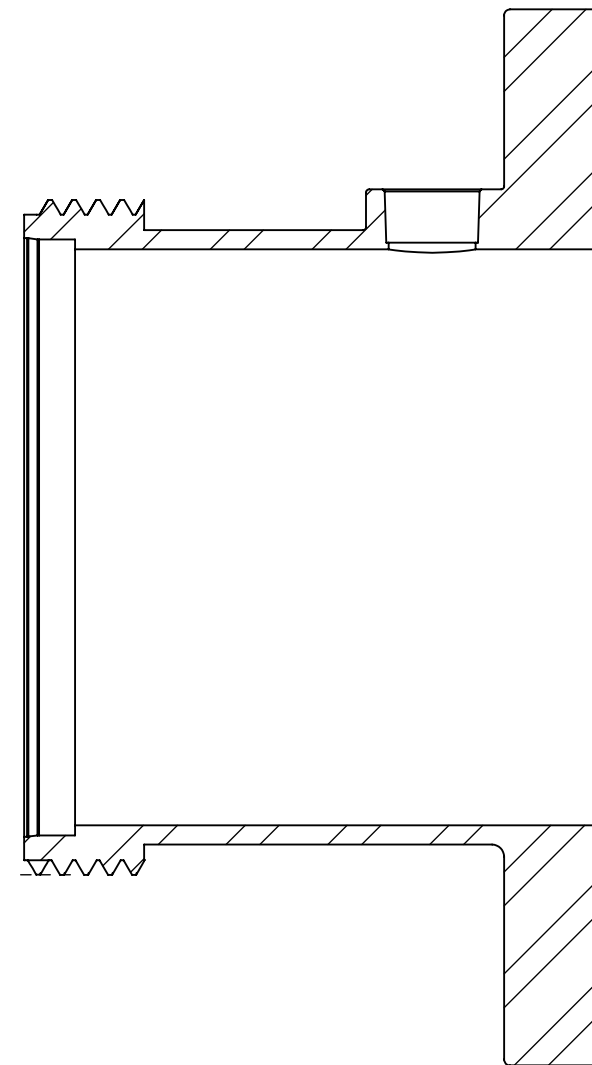
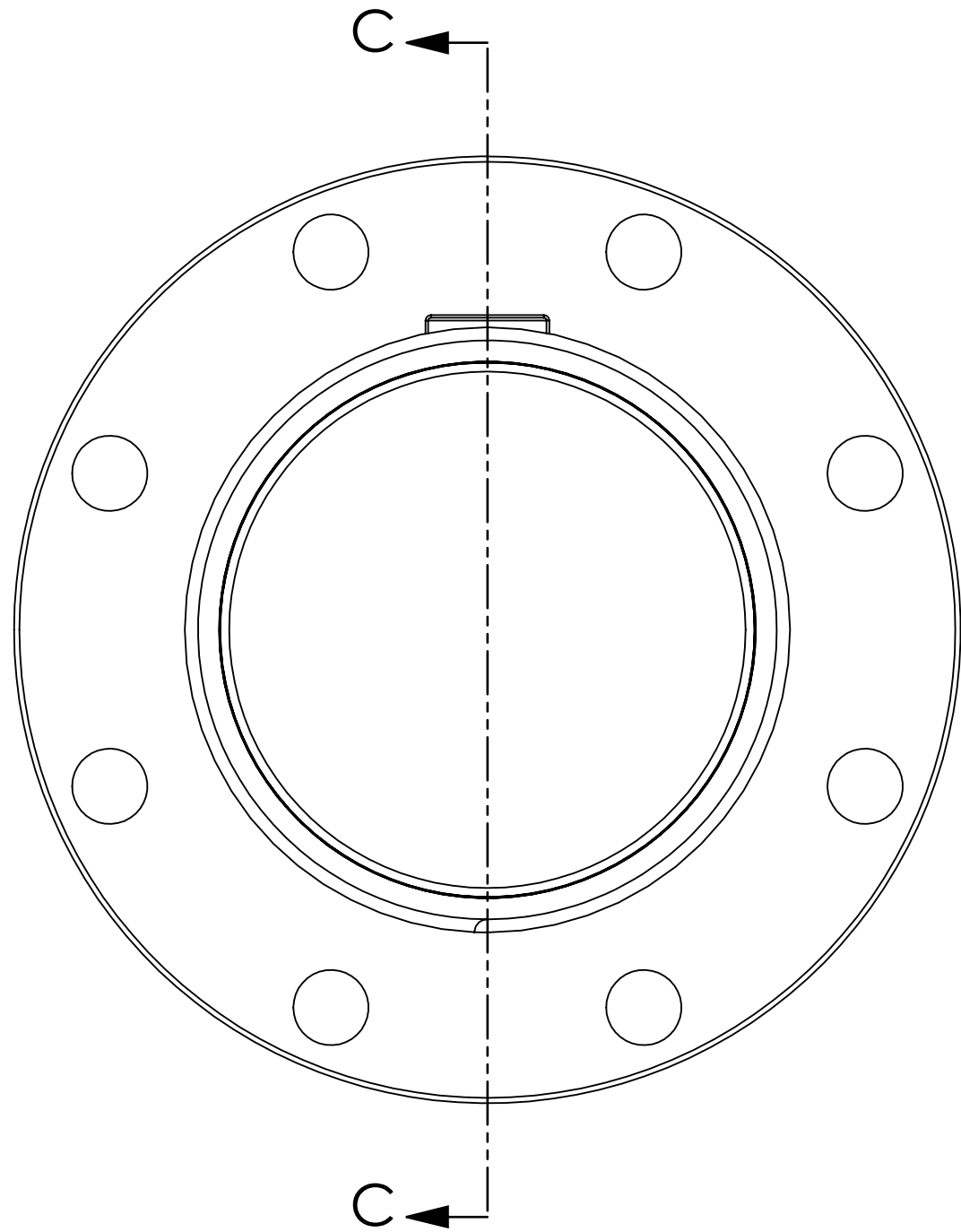
		6405 SW 38th St, Bldg 200 Ocala, FL 34474 Phone: 800.327.7638 www.fireprograms.com	
		TITLE <b>Cstg 6.0 NST x 6.0 ASME</b>	
DRAWING NUMBER <b>500348</b>		REV A	SHEET SCALE 1:4
		DATE 9/1/2023	SHEET <b>1 OF 3</b>

REVISIONS		
REV.	DATE	DESCRIPTION
A	9/1/2023	Initial Release



SECTION B-B

DRAWING NOTES UNLESS OTHERWISE SPECIFIED 1. All dimensions are in inches. 2. Do not scale drawing. 3. Decimal Tolerance X.XX = +/- 0.01 4. Decimal Tolerance X.XXX = +/- 0.005 5. Fractional Tolerance X/X = +/- 1/16 6. Angle Tolerance: 0.5 degrees	<b>FirePrograms</b> <small>TITLE</small> <b>Cstg 6.0 NST x 6.0 ASME</b>		6405 SW 38th St, Bldg 200 Ocala, FL 34474 Phone: 800.327.7638 www.fireprograms.com	
	APPROXIMATE WEIGHT (LBS) <b>24.816</b>		DRAWING NUMBER <b>500348</b>	REV A
THE INFORMATION CONTAINED IN THIS DRAWING IS THE SOLE PROPERTY OF FIRE PROGRAMS, LLC. ANY REPRODUCTION IN PART OR AS A WHOLE WITHOUT THE WRITTEN PERMISSION OF FIRE PROGRAMS, LLC IS PROHIBITED.			DATE 9/1/2023	SHEET <b>2 OF 3</b>



SECTION C-C

DRAWING NOTES UNLESS OTHERWISE SPECIFIED 1. All dimensions are in inches. 2. Do not scale drawing. 3. Decimal Tolerance X.XX = +/- 0.01 4. Decimal Tolerance X.XXX = +/- 0.005 5. Fractional Tolerance X/X = +/- 1/16 6. Angle Tolerance: 0.5 degrees	<b>FirePrograms</b> 6405 SW 38th St, Bldg 200 Ocala, FL 34474 Phone: 800.327.7638 www.fireprograms.com	
	TITLE <b>Cstg 6.0 NST x 6.0 ASME          w/ Strainer</b>	
APPROXIMATE WEIGHT (LBS) <b>24.504</b>	DRAWING NUMBER <b>500348S</b>	
THE INFORMATION CONTAINED IN THIS DRAWING IS THE SOLE PROPERTY OF FIRE PROGRAMS, LLC. ANY REPRODUCTION IN PART OR AS A WHOLE WITHOUT THE WRITTEN PERMISSION OF FIRE PROGRAMS, LLC IS PROHIBITED.	REV <b>A</b>	SHEET SCALE <b>1:2</b>
	DATE <b>9/1/2023</b>	SHEET <b>3 OF 3</b>