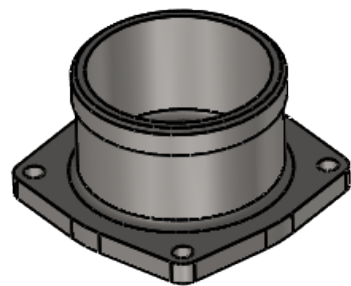
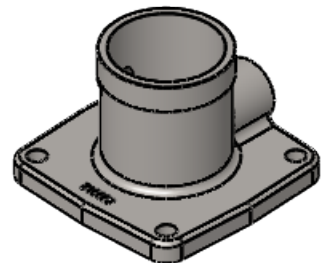


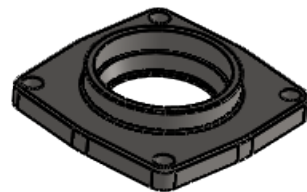
Additional Valve Flange Options



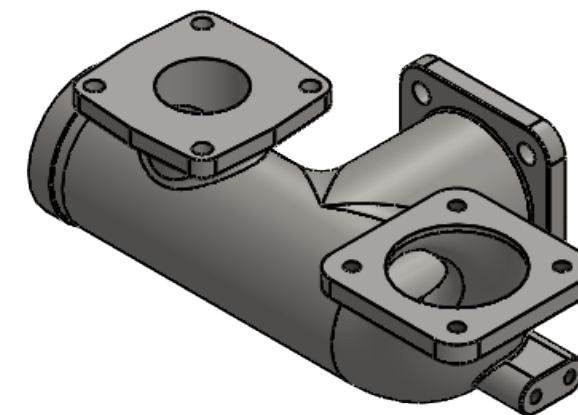
500069 3.0" Valve x 4.0" Vic



500011 2.0" Valve x 2.0" Vic
500012 2.5" Valve x 2.5" Vic
500013 3.0" Valve x 3.0" Vic



500184 2.0" Valve x 2.0" Pipe
500185 2.5" Valve x 2.5" Pipe
500186 3.0" Valve x 3.0" Pipe



500121 2.0" Valve x 2.0" Vic 90 Deg
500124 2.0" Valve x 2.0" Vic 45 Deg

500119 Swivel Vlv Flange Standoff

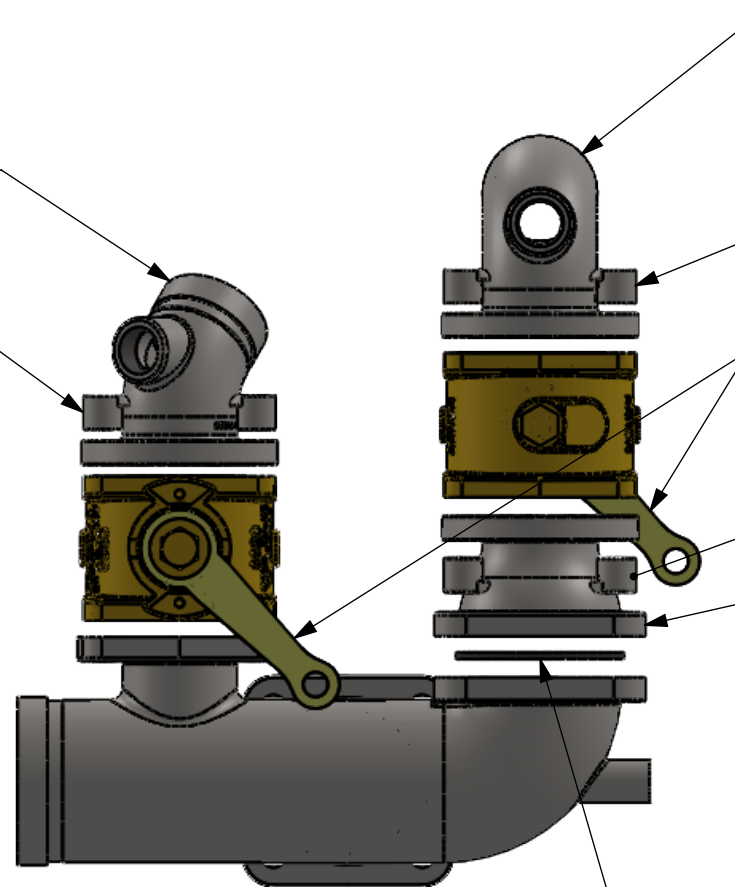
500121 2.0" Valve x 2.0" Vic 90 Deg
500122 2.5" Valve x 2.5" Vic 90 Deg
500123 3.0" Valve x 3.0" Vic 90 Deg
500124 2.0" Valve x 2.0" Vic 45 Deg
500125 2.5" Valve x 2.5" Vic 45 Deg
500126 3.0" Valve x 3.0" Vic 45 Deg

500119 Swivel Vlv Flange Standoff

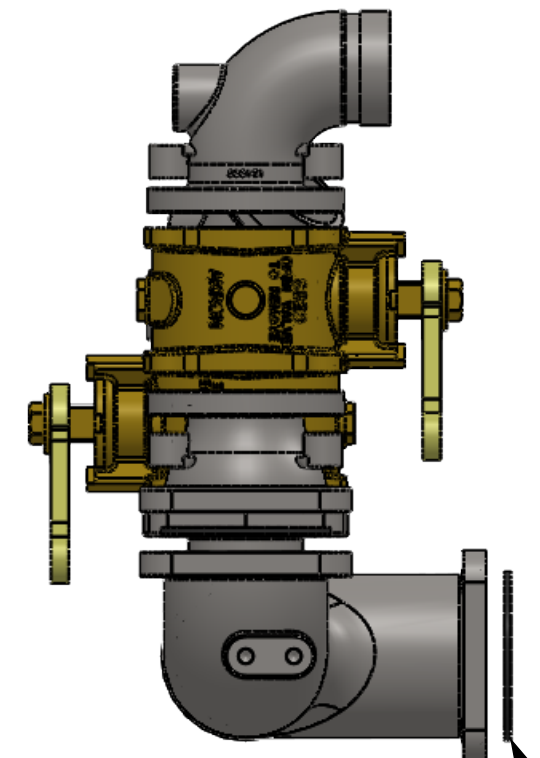
500079-3 Valve Handle 3"
500079-4 Valve Handle 4"
500079-575 Valve Handle 5.75"

500119 Swivel Vlv Flange Standoff

500187 115 x 2.0" Valve
500188 115 x 2.5" Valve
500189 115 x 3.0" Valve



AS568-236 Square O-ring



AS568-236 Square O-ring

DRAWING NOTES UNLESS OTHERWISE SPECIFIED

- All dimensions are in inches.
- Do not scale drawing.
- Decimal Tolerance X.XX = +/- 0.01
- Decimal Tolerance X.XXX = +/- 0.005
- Fractional Tolerance X/X = +/- 1/16
- Angle Tolerance: 0.5 degrees

APPROXIMATE WEIGHT (LBS)	13.487
THE INFORMATION CONTAINED IN THIS DRAWING IS THE SOLE PROPERTY OF FIRE PROGRAMS, LLC. ANY REPRODUCTION IN PART OR AS A WHOLE WITHOUT THE WRITTEN PERMISSION OF FIRE PROGRAMS, LLC IS PROHIBITED.	

		6405 SW 38th St, Bldg 200 Ocala, FL 34474 Phone: 800.327.7638 www.fireprograms.com	
		TITLE Cstg Front Manifold LS	
DRAWING NUMBER	500236	REV	B
		DATE	6/15/2020
		SHEET SCALE	1:4
		SHEET	2 OF 2